



Web User Account Management

Contents

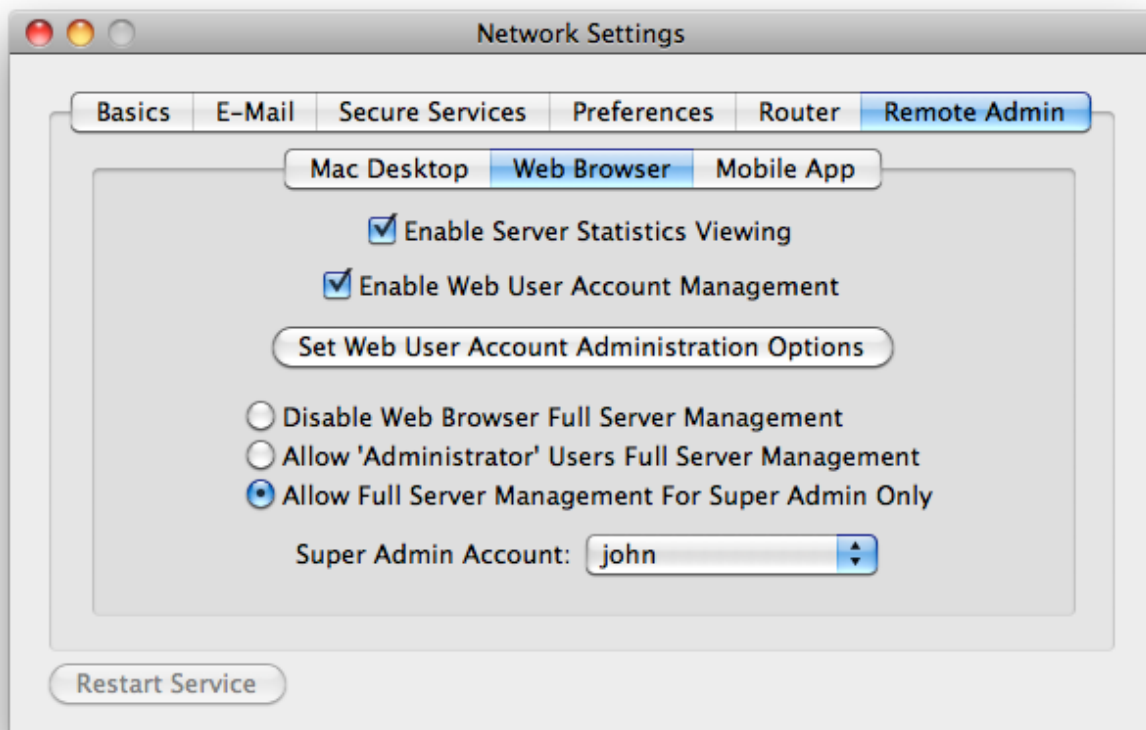
Configuring Remote Administration	2
Using Rumpus Remote Administration	6
Administration Groups	7
Allowing Users To Change Their Own Passwords	8

In most cases, as the Rumpus server administrator, you will probably not need to adjust basic configuration options on a regular basis. The exception to this is configuring User Accounts, which may need to be added, updated, or deleted frequently. In addition, you may find that you need to allow other trusted people to create and manage user accounts, as well as yourself.

For this reason, Rumpus supports Web-based user account management. This allows you to configure users and their access privileges from anywhere on the Internet using a standard Web browser. You can also allow users to change their own passwords using a Web browser, improving security by encouraging frequent password rotation.

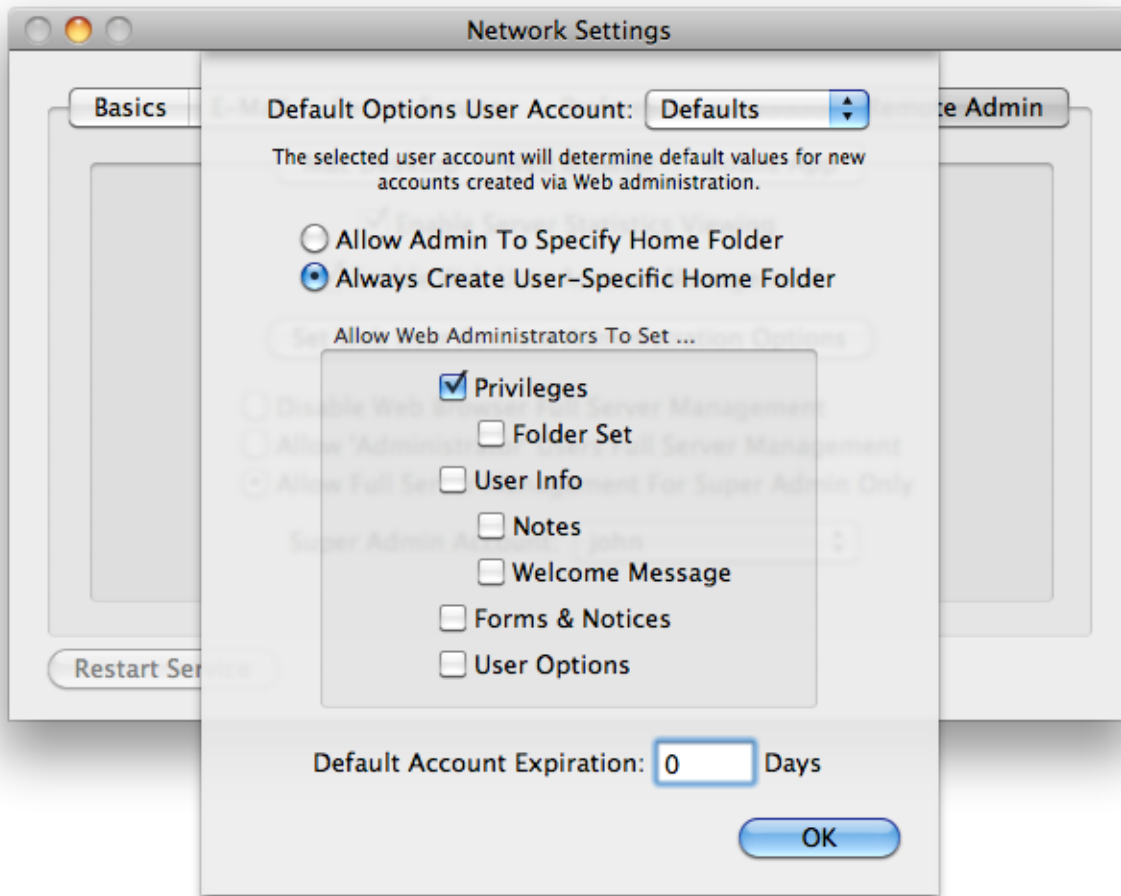
Configuring Remote Administration

To configure Web-based administration, open the “Network Settings” window, flip to the “Remote Admin” tab, and then select the “Web Browser” tab, as shown below.



Rumpus Web browser administration setup

Start by checking the “Enable Web User Account Management” option, to turn on remote administration. Next, click the “Set Web User Account Administration Options” button to open the setup sheet, shown below.



Rumpus Web browser-based user administration options

From the “Default Options User Account” menu, be sure to select a user account which will serve as a template when new user accounts are created via Web administration. When a new account is created, all of the settings specified for the template account will be used as default values for the new account, except the account name and password, of course.

Important! It is often best to create a unique Rumpus user account to act as the “Template Account” for Rumpus user administration. In the example shown above, a user account called “UserDefaults” has been defined and assigned a long, random string password so that it can’t be used for server access directly. The “UserDefaults” user account is then set with privileges and other user account options which will serve as default values for new user accounts created via the Web user account administration function.

Setting New User Account Home Folders

The “Allow Admin To Specify Home Folder/ Always Create User-Specific Home Folder” option allows you to choose between two different ways of defining new user home folders. When the first option is selected, Web administrators will be able to set the home folder for user accounts as they like. User account home folders will always be restricted to the administrator’s own home folder, but when “Allow Admin To Specify Home Folder” is selected, specifying the user home folder will be up to the administrator.

When “Always Create User-Specific Home Folder” is chosen, however, Web administrators will not be allowed to set user home folders, and in fact won’t even see the user account home folder in the Web interface. Instead, a folder will be created inside the administrator’s home folder with the name of each newly created user account, and this folder will be set as the new user home. For example, if the administrator “Bob”, whose home folder is “/Users/Shared/Bob/” creates a new user account called “Mary”, a new folder will be created at “/Users/Shared/Bob/Mary/”, and that folder will be set as Mary’s home. This not only simplifies and restricts folder setup for administrators, but it also allows them to view and manage the content of their own users when logged in through the normal FTP or Web interfaces.

Choosing What Administrators Choose

To simplify the interface for your administrators, and to prevent them from inadvertently changing user account options that aren’t relevant for your server, Rumpus allows you to choose what user account settings are configurable via the Web. In the “Allow Web Administrators To Select ...” box, simply enable or disable each set of user account settings your administrators should be able to view and manage. User account settings that are hidden from the administration interface will always remain at their default value, as defined in the “Default Options User Account”.

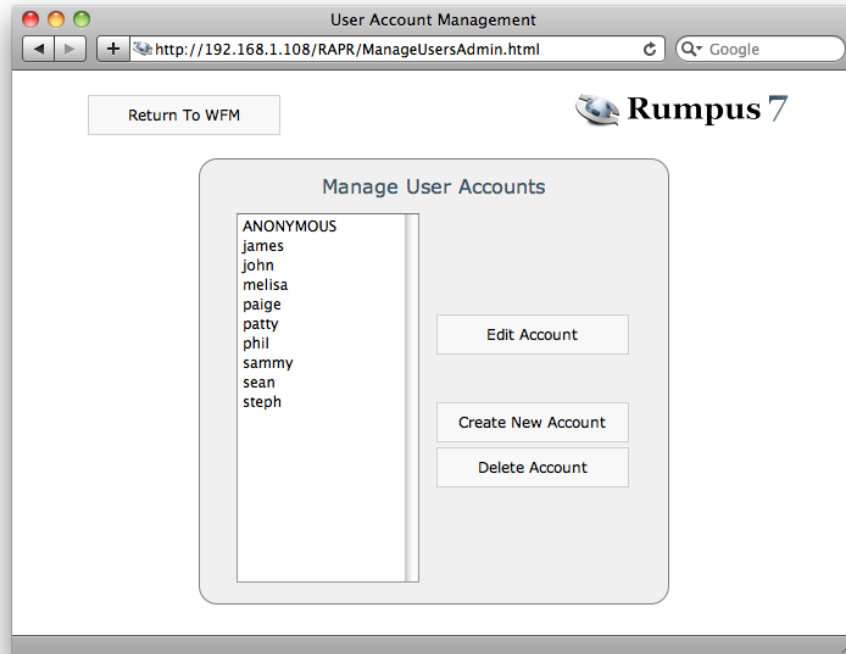
For example, to allow administrators to create user accounts, but only adjust the user account privileges and e-mail address, check the “Privileges” and “User Info” checkboxes, leaving all others off. In this case, only the necessary user account options will be suppressed in the Web administration interface, and will be left at the default values assigned to the template user account.

Expiring Accounts

The “Default Account Expiration” option allows you to have new user accounts automatically expire after a specified number of days. This option is ignored if the selected Template Account is configured as a “Permanent” user account. If the account type is set as “Disable” or “Delete” however, the date set for the expiration will be the date on which the account is created, plus the specified number of days. When Web administrators can adjust user account “User Options”, the expiration date will be set as a default. If the “User Options” settings are disabled in the “Administrative Options” box, then the expiration date will be enforced and outside of the administrator’s control.

Using Rumpus Remote Administration

With Web user administration enabled, users with “Administrator Access” privileges can manage users simply by logging in the the Web File Manager. In the task bar on the main WFM page, administrators will see a “Manage Users” icon that can be used to access the user administration page, shown below.



Remote user account administration via Web browser

In this example, only the “Privileges” and “User Info” user account options have been enabled on the “Remote Administration” sheet, so only those options are presented. The list of user accounts, and the account settings, operate in essentially the same way as they do on the “Define Users” window in Rumpus.

To create a new user account, click the "Create New Account" link. Accounts can be deleted by selecting the account and clicking “Delete Account”. To modify an existing account, select the user account from the list and click “Edit Account”.

Administration Groups

When a Web administrator (a Rumpus user with “Administrator Access” enabled) has a home folder assigned as “ROOT”, meaning that they have full access to the Rumpus FTP root folder, then that administrator will be allowed to view and manage all user accounts, and create new ones without restriction. However, when the administrator’s home folder is set to allow them access only to a specific folder, then user accounts managed by that administrator will also be restricted to that folder. In this case, the user account with administration privileges can be considered a sub-administrator, since new user accounts they create will be restricted to home folders that reside within the administrator’s home folder, and they will only be able to view and manage user accounts that fall within their own home folder group.

When creating a new user account, a sub-administrator will specify a partial path for the new user home folder, simplifying account setup. For example, if a sub-administrator were to create a new user account with a home folder of “mary”, then a folder called “mary” would be created within the sub-administrator’s own home folder, and the new user account home folder would be set to that folder’s path.

Allowing Users To Change Their Own Passwords

To enable users to update their own passwords, the Web File Manager needs to be enabled, as described in the “Web File Manager” article in the Rumpus package. Also, check the “Enable User Password Changes” option on the “Web Server” tab of the Web Settings window within Rumpus.

With this option enabled, WFM users will see a “Change Your Password” link at the bottom of the “Account Info” area on the primary WFM page. Clicking this link takes the user to a simple form allowing them to select and confirm a new password for accessing the Rumpus server.

The password change form can be customized as needed. For details see the “Customizing The WFM Interface” section of the “Web File Manager” article in the Rumpus package.