



# Managing Your Server Via Web Browser

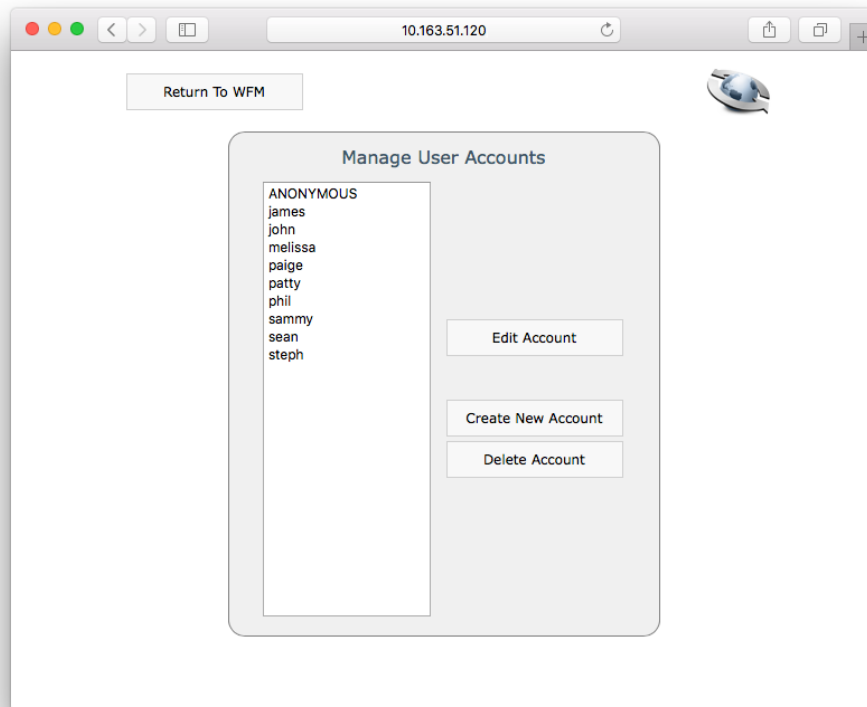
## Contents

<b>Sub-Administrator User Account Management</b>	<b>2</b>
<b>Configuring Remote Administration (Windows)</b>	<b>4</b>
<b>Configuring Remote Administration (Mac)</b>	<b>5</b>
<b>Setting New User Account Home Folders</b>	<b>7</b>
<b>Choosing What Administrators Choose</b>	<b>7</b>
<b>Fully Automatic, Easy User Accounts</b>	<b>8</b>
<b>Expiring Accounts</b>	<b>8</b>
<b>Super-Admin Full Server Administration</b>	<b>9</b>

## Sub-Administrator User Account Management

By far the most common ongoing server administration task is that of managing user accounts. In fact, it's a task you may want to let other trusted people help you with, so Rumpus allows you to define "sub-administrators" who can create and manage users.

With Web user administration enabled, users with "Administrator Access" privileges can manage users simply by logging in to the the Web File Manager. In the action menu on the main WFM page, administrators will see a "Manage Users" option that can be used to access the user administration page, shown below.



*Remote user account administration via Web browser*

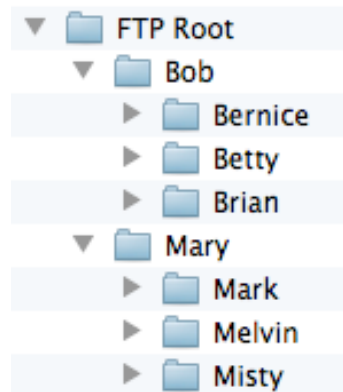
To create a new user account, click the "Create New Account" link. Accounts can be deleted by selecting the account and clicking "Delete Account". To modify an existing account, select the user account from the list and click "Edit Account", or simply double-click the account name in the list.

## Sub-Administrator Restrictions

As the primary server administrator, or “Super Admin”, you have the ability to manage every aspect of your Rumpus server and have full control over user accounts. Sub-administrators, by contrast, have only limited user account management and no access to other server administration functions at all.

Within user account management, a sub-administrator’s access is limited by their own Home Folder. A sub-administrator can only assign access to folders which he or she can also access. In other words, when assigning a user account Home Folder, a sub-administrator is restricted to selecting a folder within his or her own Home Folder. In addition, when viewing the list of user accounts, a sub-administrator will see only those user accounts whose Home Folder falls within his or her own.

Consider the case where you are the super admin and you have assigned 2 additional users, “Bob” and “Mary”, the administrator privilege, making them sub-administrators. Your FTP folder hierarchy might look like this:



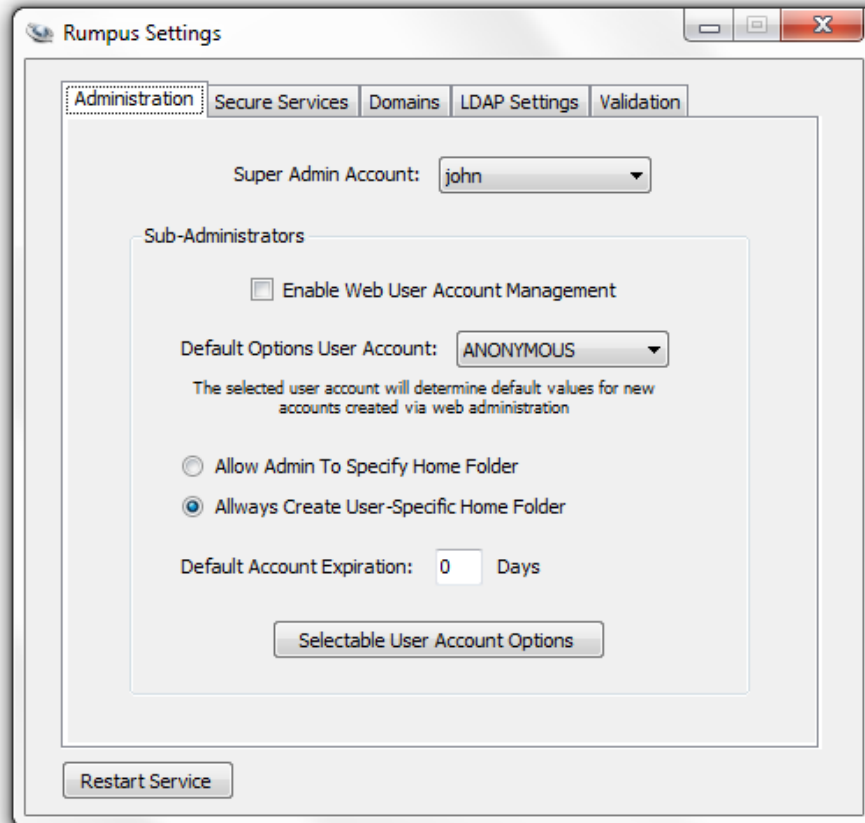
In this example, when Bob accesses the “Manage Users” function, he will see only himself, “Bernice”, “Betty” and “Brian” listed in the user account list. And if Bob creates a new user account, he will not be able to assign the account a Home Folder in the FTP Root or Mary’s content area. Bob can only assign Home Folders within the “Bob” folder.

User account options can also be limited for sub-administrators, simplifying the user account management interface by eliminating those user options sub-administrators don’t need. To specify which options sub-administrators should and should not be able to set, see the “Configuring Remote Administration” section below.

Finally, as the super admin, when you access the “Manage Users” option in Rumpus, you will also have sub-administrator restrictions placed on your ability to manage user accounts. To have full user administration privileges, including the ability to view all accounts and assign Home Folders that reside on any accessible drive of the server, use the “Server Setup: Define Users” function. “Manage Users” gives you the option of using a simplified user account management function for simple user management tasks, while “Server Setup: Define Users” provides full-access user administration when you need it.

## Configuring Remote Administration (Windows)

To configure Web-based administration, open the “Network Settings” window, and flip to the “Administration” tab.



*The Administration Settings tab.*

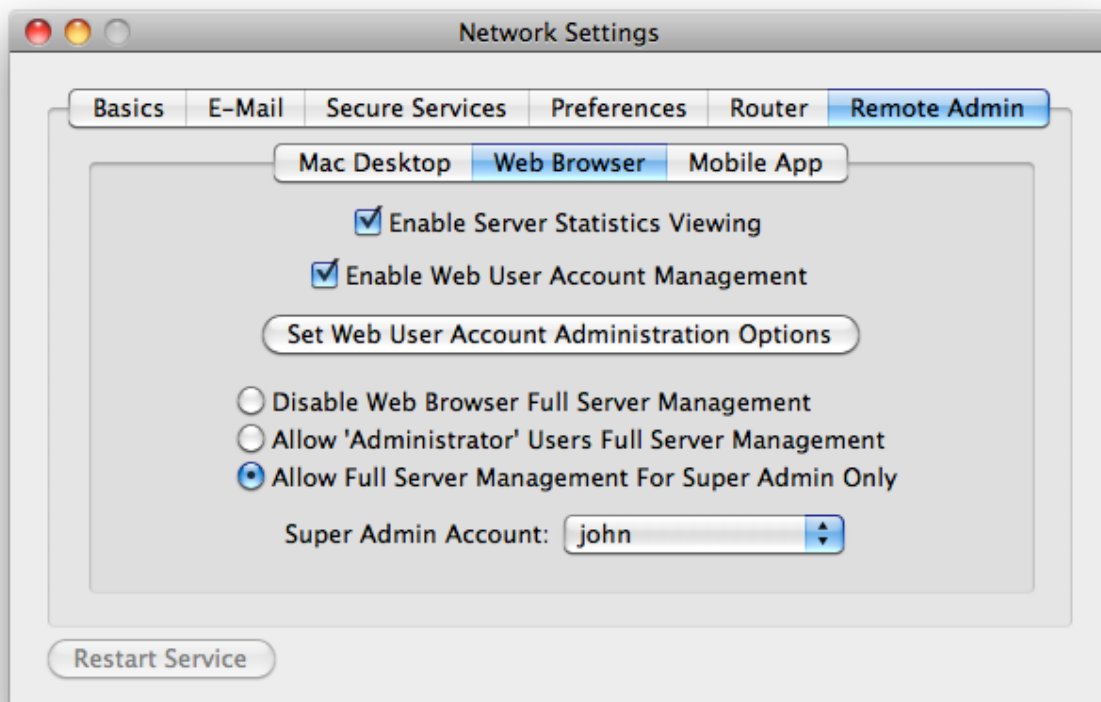
Start by checking the “Enable Web User Account Management” option, to turn on remote administration.

From the “Default Options User Account” menu, be sure to select a user account which will serve as a template when new user accounts are created via Web administration. When a new account is created, all of the settings specified for the template account will be used as default values for the new account, except the account name and password, of course.

**Important!** It is often best to create a unique Rumpus user account to act as the “Template Account” for Rumpus user administration. In the example shown above, a user account called “Defaults” has been defined and assigned a long, random password so that it can’t be used for server access directly. The “Defaults” user account is then set with privileges and other user account options which will serve as default values for new user accounts created via the Web user account administration function.

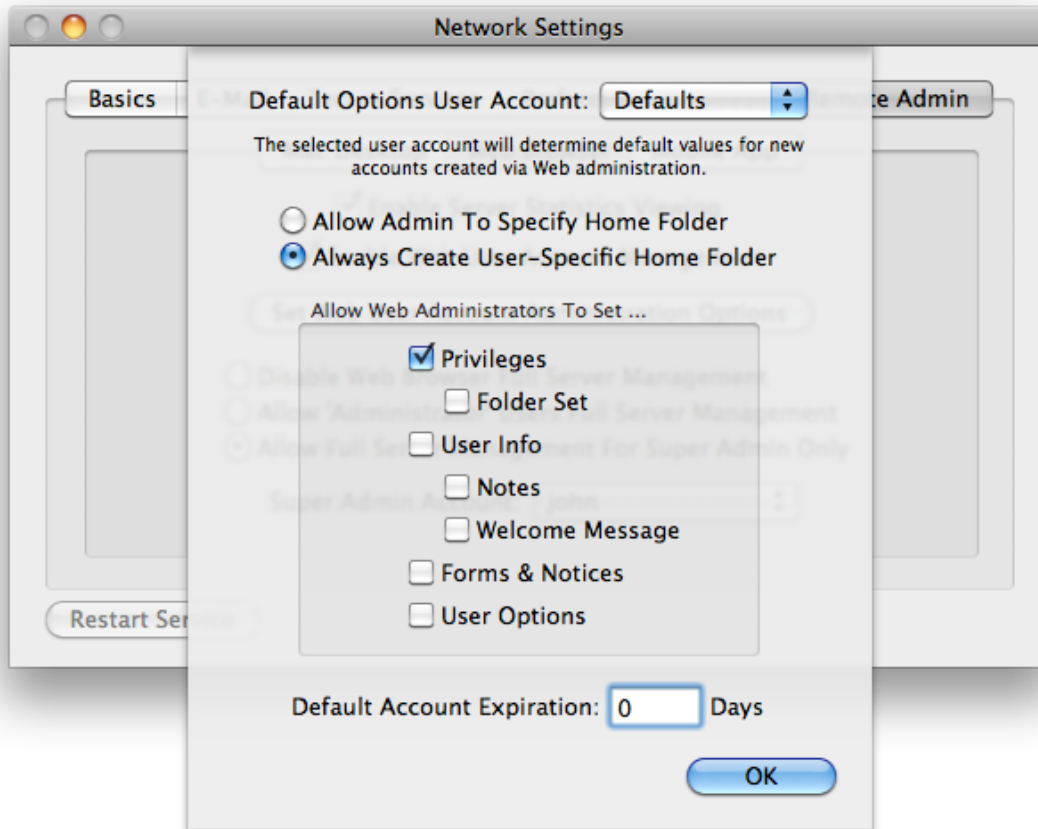
## Configuring Remote Administration (Mac)

To configure Web-based administration, open the “Network Settings” window, flip to the “Remote Admin” tab, and then select the “Web Browser” tab, as shown below.



*Rumpus Web browser administration setup*

Start by checking the “Enable Web User Account Management” option, to turn on remote administration. Next, click the “Set Web User Account Administration Options” button to open the setup sheet, shown below.



*Rumpus Web browser-based user administration options*

From the “Default Options User Account” menu, be sure to select a user account which will serve as a template when new user accounts are created via Web administration. When a new account is created, all of the settings specified for the template account will be used as default values for the new account, except the account name and password, of course.

**Important!** It is often best to create a unique Rumpus user account to act as the “Template Account” for Rumpus user administration. In the example shown above, a user account called “Defaults” has been defined and assigned a long, random password so that it can’t be used for server access directly. The “Defaults” user account is then set with privileges and other user account options which will serve as default values for new user accounts created via the Web user account administration function.

## Setting New User Account Home Folders

The “Allow Admin To Specify Home Folder/ Always Create User-Specific Home Folder” option allows you to choose between two different ways of defining new user home folders. When the first option is selected, Web administrators will be able to set the home folder for user accounts as they like. User account home folders will always be restricted to the administrator’s own home folder, but when “Allow Admin To Specify Home Folder” is selected, specifying the user home folder will be up to the administrator.

When “Always Create User-Specific Home Folder” is chosen, however, Web administrators will not be allowed to set user home folders, and in fact won’t even see the user account home folder in the Web interface. Instead, a folder will be created inside the administrator’s home folder with the name of each newly created user account, and this folder will be set as the new user home. For example, if the administrator “Bob”, whose home folder is “/Users/Shared/Bob/” creates a new user account called “Brenda”, a new folder will be created at “/Users/Shared/Bob/Brenda/”, and that folder will be set as Brenda’s home. This not only simplifies and restricts folder setup for administrators, but it also allows them to view and manage the content of their own users when logged in through the normal FTP or Web interfaces.

## Choosing What Administrators Choose

To simplify the interface for your administrators, and to prevent them from inadvertently changing user account options that aren’t relevant for your server, Rumpus allows you to choose what user account settings are configurable via the Web. In the “Allow Web Administrators To Select ...” box, simply enable or disable each set of user account settings your administrators should be able to view and manage. User account settings that are hidden from the administration interface will always remain at their default value, as defined in the “Default Options User Account”.

For example, to allow administrators to create user accounts, but only adjust the user account privileges and e-mail address, check the “Privileges” and “User Info” checkboxes, leaving all others off. In this case, only the necessary user account options will be displayed in the Web administration interface, and all other user account options will be left at the default values assigned by the template user account.

## Fully Automatic, Easy User Accounts

When you select the “Always Create User-Specific Home Folder” user administration option and turn off all “Allow Web Administrators To Set ...” options, you create the simplest possible interface for Web user account administration.

With this setup, sub-administrators can grant additional users access to the server simply by specifying the new user’s name and password. An empty folder for the new user is created automatically, and is placed within the sub-administrator’s own Home Folder, where they can easily access the new user’s content. Sub-administrators can view their own user accounts, but not the accounts of any other sub-administrator, and when they view an account, they see no complicated options or account details. Sub-administrators can also easily delete user accounts when they are no longer needed, or they can be set to be automatically removed after a set period of time.

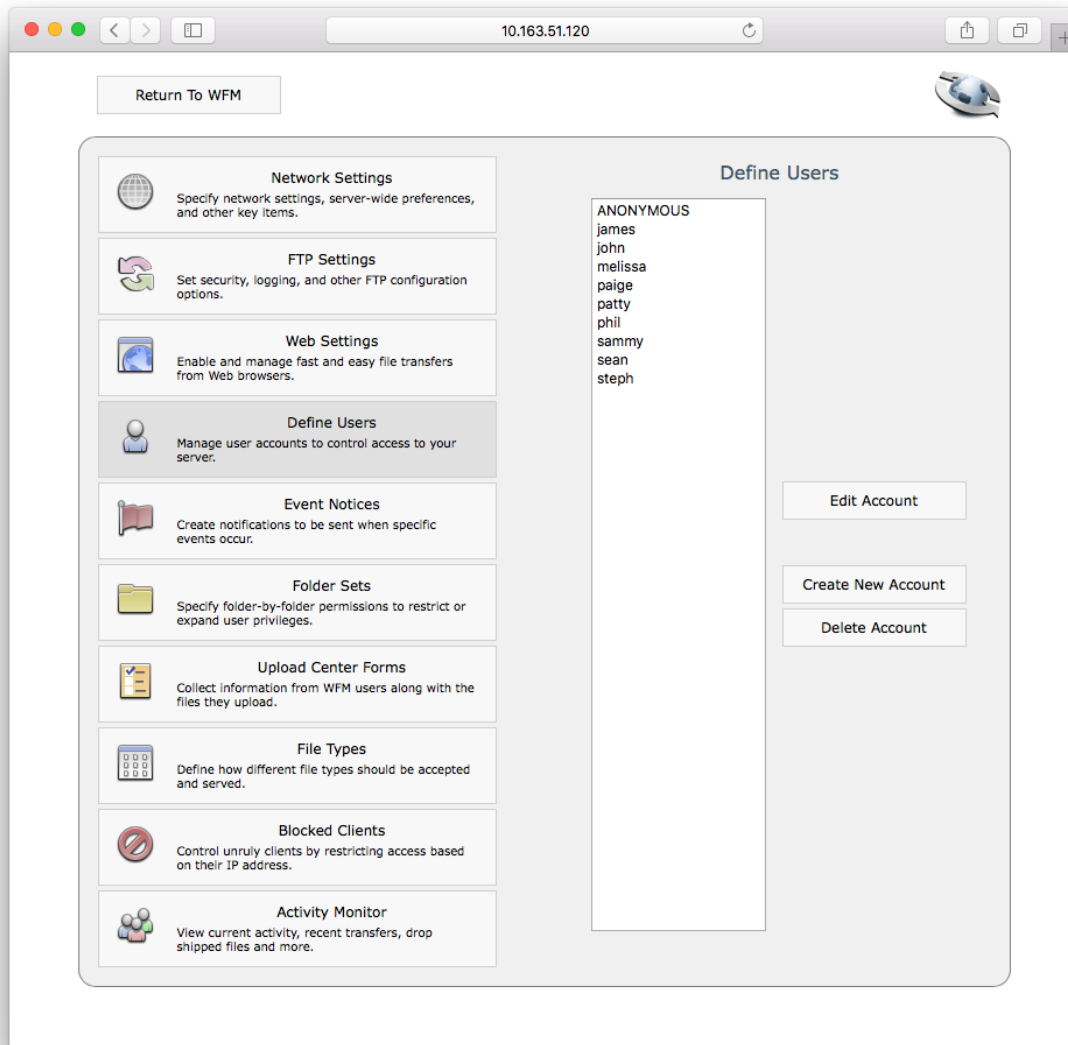
## Expiring Accounts

The “Default Account Expiration” option allows you to have new user accounts automatically expire after a specified number of days. This option is ignored if the selected Template Account is configured as a “Permanent” user account. If the account type is set as “Disable” or “Delete” however, the date set for the expiration will be the date on which the account is created, plus the specified number of days. When Web administrators can adjust user account “User Options”, the expiration date will be set as a default. If the “User Options” settings are disabled in the “Administrative Options” box, then the expiration date will be enforced and outside of the administrator’s control.



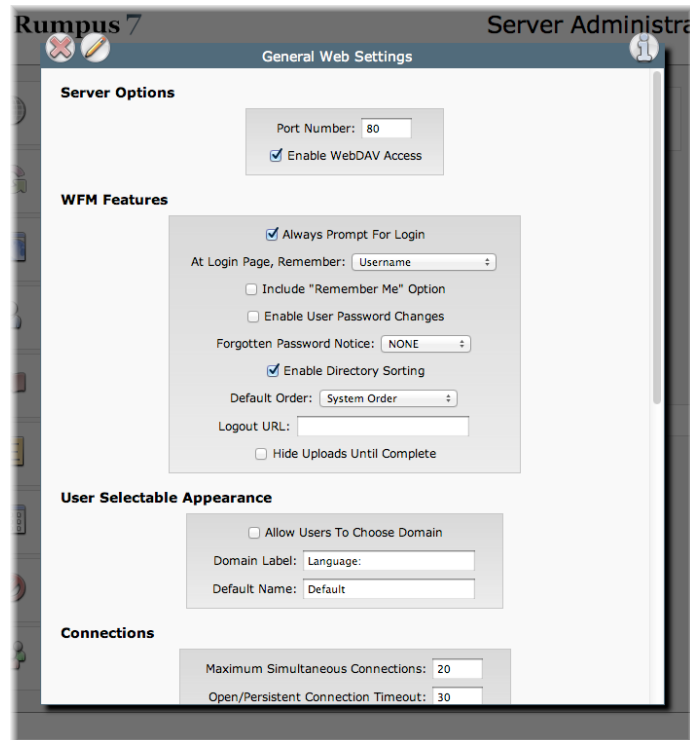
## Super-Admin Full Server Administration

As the super administrator, you can perform all system administration via the Rumpus Web interface, and have no limits on where you can assign user account Home Folders. From the Web File Manager, click “Server Setup” to access server administration.



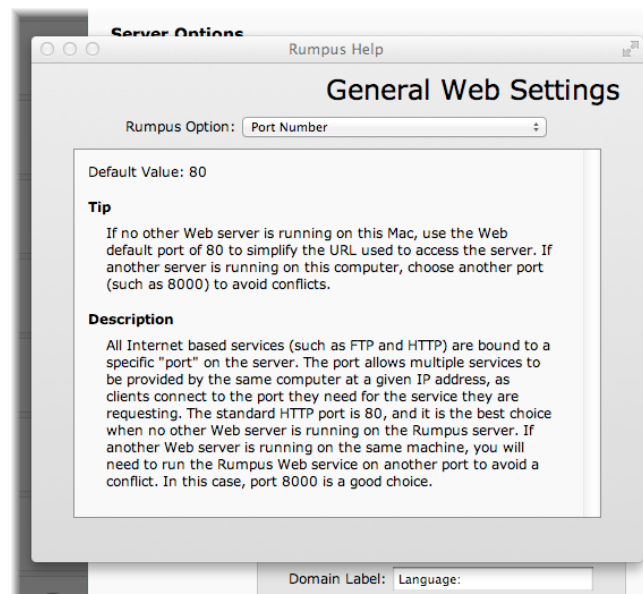
*The Server Administration panel, showing Web Settings option selections.*

Some Rumpus settings, like “Network Settings” and “FTP Settings” are global, meaning that each setting applies to the server in all cases, so an option detail window will open when the settings button is clicked. Other settings, like “Define Users” and “Event Notices”, are applied to specific items, like user accounts or notices, so you will be presented with a list of items. Select the item and click “Edit”, or simply double-click on the item in the list to open the option detail window for that item.



*The General Web Settings detail options window.*

To close the option detail window, without saving any changes to the fields displayed, click the “X” close button at the top left of the window. To close the option detail window and save any changes made, click the “pencil” write changes button. For a help page on each and every setting shown on the window, click the “i” info button at the top right corner of the window. The help page is the first place to go when you have any question about the function controlled by any setting available in Rumpus.



*The Help page in Rumpus' Web server administration interface.*

## Super Administrator User Account Administration

The super administrator “Define Users” function, found in “Server Setup”, is very similar to the “Manage Users” Web interface for sub-administrators. There are, however, a few key differences when managing accounts using the “Define Users” function:

- The super admin is always able to view and manage all user accounts, while sub-administrators see only those accounts with Home Folders that are accessible by the administrator.
- New user Home Folders will default to the FTP Root folder, unless another user account is selected as a default settings account when the new account is created.
- When editing a user account, all available Rumpus user account options will be displayed and are editable as needed. (Sub-administrators may be restricted from viewing or managing options based on the “Allow Web Administrators To Set ...” options.)
- The super admin can assign “Administrator” privileges, allowing him or her to create sub-administration accounts, while sub-administrators can not.
- New user accounts will default to factory default values, not the values of the “Default Options User Account”.